

## Upcoming Shows

### Kalamazoo Institute of Art – 58<sup>th</sup> Annual Fair

June 3<sup>rd</sup> – 4<sup>th</sup>

Friday: Noon - 7PM • Saturday: 9AM – 4PM  
Kalamazoo, Michigan (Bronson Park)

### Art by the Falls

June 11<sup>th</sup> – 12<sup>th</sup>

Saturday: 10AM – 7PM • Sunday: 11AM – 5PM  
Chagrin Falls, Ohio (Riverside Park)

### Crosby Festival of the Arts

June 25<sup>th</sup> – 26<sup>st</sup>

Toledo, Ohio (Botanical Gardens)  
<http://http://www.toledogarden.org/content/crosby>

### Bristol Renaissance Faire

July 9<sup>th</sup> – September 5<sup>th</sup> (Weekends only, plus Labor Day)  
Bristol, Wisconsin

### Gems of Antiquity - 542 The Buttery

Visit <http://www.renfaire.com> for discount tickets.

*Bring any of my jewelry for a free cleaning and inspection. Only here can you select from my loose gems to put in one of my settings.*

### Black Swamp Arts Festival

September 10<sup>th</sup> – 11<sup>th</sup>

Bowling Green, Ohio (Wooster and Main Street)  
<http://www.blackswamparts.org>

### Great Lakes Art Fair

October 14<sup>th</sup> – 16<sup>th</sup>

Novi, Michigan (Suburban Collection Showplace)  
<http://www.greatlakesartfair.com>

### Autumn Festival

Nov. 17<sup>th</sup> – 20<sup>th</sup>

Villa Park, Illinois, at the Odeum (West Chicago suburb)  
Hours & \$1 off coupons at: <http://www.hpifestivals.com>

### Winter Fair

December 2<sup>nd</sup> – 4<sup>th</sup>

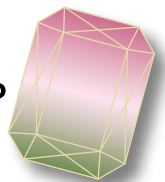
Columbus, Ohio (Ohio State Fairgrounds)  
[http://www.ohiocraft.org/fairs\\_wf.html](http://www.ohiocraft.org/fairs_wf.html)

## PAUL HAPIP JEWELRY

## Gems of Antiquity

P.O. Box 329 • Twin Lakes, WI 53181  
Phone: 262-537-2884

What gem is famous  
for having two  
different colors  
in the same stone?



## PAUL HAPIP JEWELRY

# Gems of Antiquity

SPRING 2011



## New Gemstones in my Collection



This year I passed on going to the world's largest gem show in Tucson, Arizona. I already have a large collection of unset gemstones but I needed to fill in certain areas that have sold well last year. So I met with two large gem dealers before their arrival in Tucson to high grade their collections.

From my main Sri Lanka dealer I was able to get blue Spinel and Sapphires in many colors: blue (rich cobalt blue), lemon yellow, white, orange and Padparascha (a blend of pink and orange). The disappointments here are that I got no white Sapphires over 1.5 carats and my costs for fine Sapphire has increased a lot! I thought prices would be stable or trend downwards as the U.S. and Europe are still in a recession. He said this is countered by rapidly growing demand in India and China (a third of the world's population!) where the economies are robust.

The other dealer I visited is famous for gems imported from Africa and Central Asia. A new deposit of Tourmaline has recently been found in Nigeria, from this they were able to buy a single crystal weighing seven kilograms (35,000 carats, 11" in diameter by 5" thick!). The largest, clear gem cut from this crystal weighs 53 carats! I bought many fine deep pink and red Tourmalines in one carat sizes.

Tourmaline is famous for having two color layers in the same crystal. If they are pink to green they are called **Watermelon Tourmaline**. In other color combinations they are called **Bi-color Tourmalines**. I have them in pink to blue and orange to green. Many of these gems I have in very short supply.

At the Renaissance Fair only I'll have a good selection of loose gems from which you can choose to put in one of my designs; or you can see these at my studio by appointment. Also, at any show, feel free to bring your own gems and we can discuss putting them into one or more of my settings.





# CLASSIC DESIGNS FOR 2011

I have been designing my own jewelry for 42 years. Thus I've accumulated quite a body of work. As I continue to produce three to five new designs each year, a lot of great old designs are either no longer made or seldom produced.

This year I've brought back five more classics for your enjoyment. Each of these has been remastered for clearer design elements and strengthened prongs.

The **Hibiscus flower** ring was originally made in 1985 and inspired from my travels in the tropics of Southeast Asia.

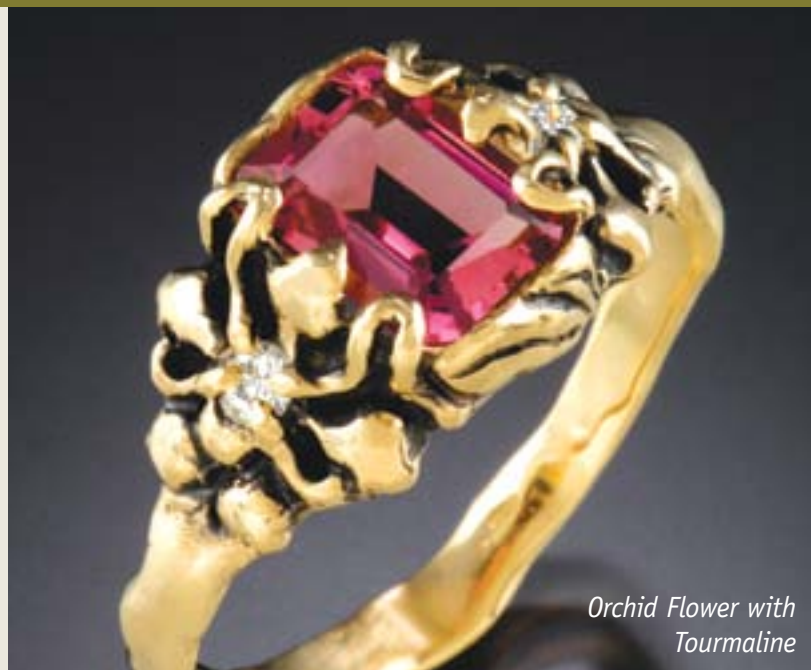
The **Orchid** ring dates from 1981 with a rectangular gem and small round gems in the center of each orchid.

The **Chestnut leaf** ring dates from 1983 – the leaf is from the Horse Chestnut Tree. The design also has grape clusters with a small gem in each and vine tendrils.

The **Five Lobe Leaf and Vine Tendril with Curlicues** originated in 1988. Again there's a small gem on each side.

The **Hyacinth flower** ring was first made in 1999 – Here I've taken this lovely flower to create pendants and earrings with a small gem in the center.

visit me online:  
<http://www.paulhapip.com>



*Orchid Flower with  
Tourmaline*



*Hibiscus Flower with  
Chrome Diopside*



*Chestnut Leaf &  
Vines with Zircon*



*Hyacinth Flowers with Diamond*



*Five Lobe Leaf & Vines  
with Sapphire*



## Gem Facts & Fantasy

**HEALING STONES:** Many gems have been credited with the power either to cure or relieve certain ailments. Physicians of past centuries often recommended that the stones should be finely powdered, Mixed with fruit juice & syrup and taken internally. It was also advised that healing stones could be worn on the body.

ILLNESS	GEM
Nightmares	Diamond
Nursing Milk	Malachite, Rock Crystal
Pestilence	Ruby
Poisons	Amethyst, Garnet, Sapphire, Unicorn Horn
Possession by Demons	Emerald
Rabies	Topaz
Sexual Disorders	Ruby
Skin Disorders	Sapphire, Lapis
Sterility	Moonstone
Stomach Disorders	Amethyst, Jade
Terror	Tourmaline
Timidity	Tourmaline, Lapis
Toothache	Amethyst
Ulcers	Sapphire, Topaz
Weak Heart	Garnet, Jade, Zircon

*(to be continued)*

\*Healing powers of gems is controversial, no guarantees implied  
\*Reproduced from *The Power of Gemstones* by Raymond J.L. Walters